

INFINET II



- **Andover's New Family of Compact Controllers for Your Most Challenging Control Applications**

- **Non-Volatile Flash Memory Provides Utmost Reliability — Stores Both Application Program and Operating System**

- **Flash Memory Allows Easy On-Line Software Updates**

- **Battery Back-up Provides Security of All Runtime Data**

- **Compatible with Both *Continuum*® and *Infinity* Systems**

- **32-bit Processor Provides Fast Scan Times**

- **Modular, Sleek Design Simplifies Installation and Routine Maintenance**

- **View and Modify Information with Optional Andover *Smart Sensor* Display**

- **LED Indicators for Easy Troubleshooting**

i2 Family of Controllers

Andover Controls continues to provide powerful, state-of-the-art controllers to keep up with tomorrow's fast-paced world. Introducing the Infinet II (i2) family of controllers — ready to meet your most challenging control applications.

Andover's i2 controllers come packed with exciting new features to make your control projects easier. For starters, because they operate on the familiar Andover Infinet peer-to-peer RS-485 network, i2 controllers are compatible with your existing *Continuum*® and *Infinity* systems and can replace their predecessors with minimal effort. Furthermore, programs from your existing Andover controllers can be loaded into the new i2 controllers with *minimal* programming changes required. You'll not only gain more memory to fulfill your application needs, but the i2's 32-bit processor provides faster scan times, with plenty of additional memory available for data logging of your critical point data.

INCREASED RELIABILITY WITH FLASH MEMORY

All i2 controllers feature Flash memory, providing the utmost in reliability. The i2's non-volatile Flash memory stores your application programs and operating system, so that in the event of a power loss, your application will be restored when power is returned. In addition, the Flash memory allows for easy upgrades of your operating system via software downloads, eliminating the need to swap out proms. All i2 controllers include an on-board battery to safeguard your runtime data — protecting all point data and log data from being lost if power is removed.

EASY INSTALLATION

The i2's sleek new open-class design provides easy access to the terminal points and eliminates the need to remove any covers. Inputs are on the left and outputs on the right for easy wiring and troubleshooting. The snap-on cover provides quick access for battery or fuse replacement, when necessary. And exposed mounting holes on all i2 controllers allow you to easily mount them in any enclosure.

SMART SENSOR INTERFACE

All i2 controllers come standard with an additional input to provide direct connection to Andover's Smart Sensor, Sensor Plus, or any standard room temperature sensor.

AndoverControls
WE'RE BUILDING SMART

System Controllers

i2920

No Air Handling Unit is too big for the i2920 System Controller. The largest of the stand-alone controllers with 512K of memory. Built-in Real Time Clock plus support for additional I/O for larger applications.



Specifications	i2920
UI (0-10 Volts) - 12 bit	16
Smart Sensor/Room Sensor Input	1
DO - Form C Relay; 3A, 24 VAC	8
AO (0-10V, 0-20mA) - 8 bit	8
Expansion I/O Port	Yes
Local Service Port	Yes
Real Time Clock	Yes
Flash Memory Size (Application)	512K
4-Line, 16-Character Display	Optional

i2810 SERIES

The i2810 and i2814 provide the same power as the i2800 series, but also include wider-range universal inputs, additional memory, removeable terminal blocks, HOA switches, and expansion I/O capability.



Specifications	i2810	i2814
UI (0-10 Volts) - 12 bit	8	8
Smart Sensor/Room Sensor Input	1	1
DO - Form C Relay; 3A, 24 VAC	8	4
AO (0-10V, 0-20mA) - 8 bit	-	4
Expansion I/O Port	Yes	Yes
Local Service Port	Yes	Yes
Real Time Clock	Yes	Yes
Flash Memory Size (Application)	256K	256K

Note: i2814 requires *Continuum* V1.5 or greater; no SX 8000 support

i2800 SERIES

The i2800 Series is perfect for the small Air Handling Unit/Roof Top controller. The i2800 and i2804 feature a built-in 24 VAC and 12-24 VDC auto sensing power supply.



Specifications	i2800	i2804
UI (0-5 Volts) - 10 bit	8	8
Smart Sensor/Room Sensor Input	1	1
DO - Form C Relay; 3A, 24 VAC	8	4
AO (0-10 Volts) - 8 bit	-	4
Expansion I/O Port	-	-
Local Service Port	Yes	Yes
Flash Memory Size (Application)	128K	128K

Note: i2804 requires *Continuum* V1.5 or greater; no SX 8000 support

i2600 SERIES

The i2600 Series is ideal for small or large groups of inputs that require monitoring in a concentrated area. Equipped with a built-in 24 VAC and 12-24 VDC auto sensing power supply the unit allows the Universal Inputs to be configured as a Supervised Input for monitoring open wires or short circuits.



Specifications	i2608	i2624
UI (0-5 Volts) - 10 bit	8	24
Smart Sensor/Room Sensor Input	-	-
Expansion I/O Port	-	-
Local Service Port	Yes	Yes
Flash Memory Size (Application)	128K	128K

Note: Requires *Continuum* V1.5 or greater; no SX 8000 support

Terminal Controllers

i2 865/866

The i2865 and i2866 are unique, low-cost VAV controllers that come equipped with a built-in actuator to streamline hardware installation and save commissioning time.



Specifications	i2865	i2866
UI (0-5 Volts) - 10 bit	4	4
Smart Sensor/Room Sensor Input	1	1
Airflow Sensor (0-2")	1	1
Damper Actuator	1	1
DO - Form A Triac	3	3
AO (0-10 Volts) - 10 bit	-	2
Expansion I/O Port	-	-
Local Service Port	Yes	Yes
Flash Memory Size (Application)	128K	128K

Note: No Supervised Inputs

i2 867

The i2867 is a compact terminal controller that provides low-cost DDC control of package units, heat pumps, unit ventilators, and other terminal unit applications.



Specifications	i2867
UI (0-5 Volts) - 10 bit	4
Smart Sensor/Room Sensor Input	1
Airflow Sensor (0-2")	-
Damper Actuator	-
DO - Form A Triac; 0.5A, 24 VAC	5
AO (0-10 Volts) - 8 bit	2
Expansion I/O Port	-
Local Service Port	Yes
Flash Memory Size (Application)	128K

i2 885

The i2885 is a cost-effective, reduced point-count VAV controller with a built-in actuator. It includes the same CPU used on all i2 controllers, plus Flash memory provides storage of both the operating system and the application program.



Specifications	i2885
UI (0-5 Volts) - 10 bit	2
Smart Sensor/Room Sensor Input	-
Airflow Sensor (0-1")	1
Damper Actuator	1
DO - Form A Triac; 0.5A, 24 VAC	2
Expansion I/O Port	-
Local Service Port	Yes
Flash Memory Size (Application and OS)	512K

Notes: No on-board battery
Requires *Continuum* V1.5 or greater;
no SX 8000 support
No Supervised Inputs

i2 850 SERIES

The i2850 series is a perfect fit for your VAV applications where external actuators are used. If additional I/O points are required, the built-in I/O Expansion Port provides the link and the module power for these points.



Specifications	i2850	i2851	i2853
UI (0-5 Volts) - 10 bit	4	4	4
Smart Sensor/Room Sensor Input	1	1	1
Airflow Sensor (0-2")	1	-	2
DO - Form A Relay; 3A, 24 VAC	3	3	3
DO - Tri-State Form K; 3A, 24 VAC	1	1	1
Expansion I/O Port	Yes	Yes	Yes
Local Service Port	Yes	Yes	Yes
Flash Memory Size (Application)	128K	128K	128K

XP EXPANSION I/O

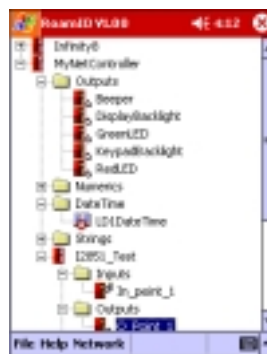
When additional I/O points are required, the I/O Expansion Family of attachable modules are available to solve all your application needs. The I2810, I2850, and I2920 series controllers support up to two I/O Expansion modules or a remote mounted display.



Exp. Models:	Provides Additional:
xPDI8	8 Digital Inputs
xPAO2	2 Analog Outputs with overrides
xPA04	4 Analog Outputs with overrides
xPDO2	2 Digital Outputs with overrides
xPDO4	4 Digital Outputs with overrides
xP Display	Local Display Module (4-Line, 16-Character)

ROAMIO

The RoamIO Service Tool, a portable device that connects to your PocketPC or laptop computer, provides easy access to point information on any Andover Infinet controller on the network. Simply connect the RoamIO to the Service port on an Infinet controller and to your Pocket PC. View and edit point data or update the



Controller flash Operating System(i2 Controllers). Easily traverse the network to any controller on the network to view the current values, modify the log configuration, add descriptions, or change the state of the point. A simple, easy-to-use, and extremely portable tool that is a must-have for your tool box.

Andover Controls Corp.
World Headquarters
 300 Brickstone Square
 Andover, Massachusetts
 01810 USA
 Tel: +1 978 470 0555
 Fax: +1 978 470 0946

Andover Controls Ltd.
 Smisby Road
 Ashby-de-la-Zouch
 Leicestershire LE65 2UG
 England
 Tel: +44 1530 417733
 Fax: +44 1530 415436

Andover Controls GmbH
 Am Seerhein 8
 D-78467 Konstanz
 Germany
 Tel: +49 7531 99370
 Fax: +49 7531 993710

Andover Controls S.A.
 Immeuble Dolomites 2
 58 Rue Roger Salengro
 94126 Fontenay Sous
 Bois Cedex, France
 Tel: +33 1 53 99 16 16
 Fax: +33 1 53 99 16 15

Andover Controls Asia
 Unit 1201-02, Phase 1,
 Cheuk Nang Centre
 9 Hillwood Road,
 Tsim Sha Tsui East
 Kowloon, Hong Kong
 Tel: +852 2739 5497
 Fax: +852 2739 7350

Andover Controls Latin America
 Insurgentes Sur 1722-501
 Col. Florida
 Mexico D.F. 01030, Mexico
 Tel: +5255 5661 5672
 Fax: +5255 5661 5415