

PROVEN.

RELIABLE.

TRUSTED.



# DVX1000™

DIGITAL VIDEO RECORDER



**INTEGRAL**  
TECHNOLOGIES  
A Balfour Beatty Company

Designed and built in the USA.

# POWERFUL SIMPLICITY RIGHT OUT OF THE BOX

DVX 1000 is a proven, reliable, and trusted digital video recorder (DVR). Designed to fit into a wide variety of security applications, DVX 1000 is available in 4, 9, and 16 video channel configurations. RemoteView software, video/system watchdog, CD-RW, network interface, modem, PTZ control, keyboard, mouse, and the Quick Installation Guide are all included with this powerful video solution. DVX 1000 clearly outperforms all other DVRs in its class.



## EASY SETUP

Plug in cameras to the back of DVX 1000 and turn the system on. DVX 1000 automatically detects your cameras and configures them for 24-hour motion-based recording. It's that simple.

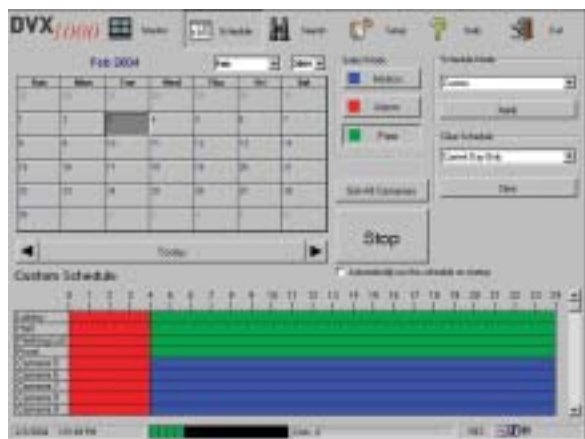
## FLEXIBLE, EASY-TO-USE RECORDING SCHEDULES

### Set Recording Schedules for Individual Cameras:

DVX 1000's Schedule page allows you to quickly customize recording schedules for individual cameras as needed.

**Recording Options:** Schedule continuous, motion, or alarm recording for each of your cameras.

**Custom Scheduling:** Create custom recording schedules for weekends, holidays, and special events.



## SEARCH AND FIND SPECIFIC VIDEO IN A SNAP

DVX 1000 allows you to quickly retrieve and view your video. When using the search function, video is instantly retrieved and ready for use. DVX 1000 also has a Smart Search feature that allows you to rapidly search a specific area of interest.



## ANALOG MONITOR OUTPUTS

Every DVX 1000 system comes standard with an analog output capable of displaying video from a single camera or multiple cameras on an external display monitor. View a single live camera or multiple live cameras with seven different display patterns.

**See events as they happen.** DVX 1000 has switched monitor outputs that can automatically switch to motion or alarm triggered events as they occur.

## PTZ CONTROL

DVX 1000 supports the most popular PTZ devices in the industry, giving you the freedom to choose the PTZ device that works best for your system and budget. Configure tours and presets to maximize your PTZ control.

With DVX 1000, you can control PTZ cameras locally or remotely using the included RemoteView software.



## VIEW MULTIPLE SYSTEMS SIMULTANEOUSLY

Using the included RemoteView software, you can view live and recorded video from all your Integral systems simultaneously—regardless of where they are located.



Imagine viewing live and recorded video from all your locations with a single PC or laptop computer. It's easy with DVX 1000 and RemoteView.

## POWERFUL VIDEO "SCRUBBING"

Easily maneuver through video using the DVX 1000 "scrub" bar tool while most other systems are still waiting for video to be uploaded to a remote client machine. Furthermore, you can quickly assess a situation by searching for movement in particular areas of a camera view.

## EASY EXPORT

Easily export only the video segment of interest. Use the DVX 1000 "scrub" bar tool to quickly mark only the portion of video you wish to export to CD. A CD-RW comes standard with DVX 1000 systems, making it easy to authenticate and export video clips that can be viewed on any PC. Use popular digital video formats such as AVI, BMP, and JPG or export to a Windows® executable file (.exe) that contains everything a user needs to playback the video without having to download a large media player program.

## USER-FRIENDLY HELP AT YOUR FINGERTIPS

Need help exporting captured images and video? Or maybe you want to brush up on using the powerful Smart Search feature. Online help is built into every DVX 1000 system. Click the HELP button for detailed information.

## REMOTEVIEW

RemoteView connectivity, included with every DVX 1000, is an application that allows users to view live and recorded video from any Integral Technologies' DVR product from a Windows®-based remote client computer via a network or regular phone line. RemoteView is easy to install and operate from a desktop computer or a laptop. Virtually any number of users can access the system simultaneously with RemoteView.

- Connect remotely to any Integral DVR through network or modem
- Full remote configuration
- Simultaneous connections to multiple systems
- Multiple simultaneous client connections to each system (one Administrator plus multiple Users)
- Viewing of live video in choice of ten video window configurations
- Control PTZ cameras remotely
- Easy, quick search and playback of recorded video
- Simultaneous playback of video from multiple cameras on multiple systems
- Search for activity in specific area of camera view (e.g., door opening), also known as Smart Search
- Export video in XPV, AVI, and self-extracting EXE file formats (for easy portability and safe keeping of video clips)
- Export still images in BMP or JPG format
- Covert cameras (user-specific restrictions to hide cameras from certain users)
- Camera tours across multiple systems
- Data rate throttling (limits bandwidth usage over network/modem connection)
- Automatic alarm display (recorded alarm video immediately appears on screen)
- Full remote setup of recording schedule
- On-screen display (OSD) of date, time, and camera name
- Image enhancement (brightness and contrast)
- Video authentication (verify video has not been tampered with)
- Online help files



**SUPERIOR MONITORING CAPABILITIES**

# PICK THE SYSTEM THAT'S RIGHT FOR YOU

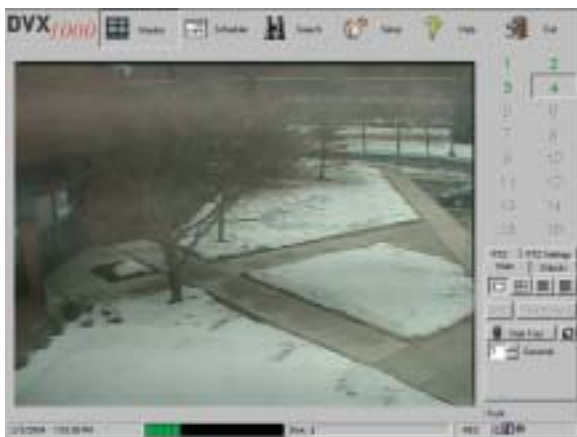
## SPECIFICATIONS

- 4, 9, or 16 video channel, NTSC or PAL
- 80 images-per-second (9 and 16 channel)
- 20 images-per-second (4 channel)
- Record resolution, 704 x 240 or 352 x 240
- Multi-camera analog output
- 16 alarm inputs, 1 alarm output
- Motion and alarm detection on each camera
- 10 selectable display views on PC monitor
- Time, date, alarm, and camera retrieval search filters
- FCC, UL, and CE approved
- Power consumption – 300W maximum
- 13"W x 15"D x 5.5"H, 23 lb. maximum
- RemoteView software requires a PC with Windows® 98 or later
- **Three-year warranty**



## STANDARD EQUIPMENT

Each unit comes standard with CD-RW drive, watchdog, network interface, phone modem, PTZ support, keyboard and mouse, full documentation, and Quick Installation Guide.



## RECORDING DAYS

How long will a digital video recorder keep old video data before it is overwritten with new data? Using the following tables as an estimation tool, you can determine the number of days your DVX 1000 will maintain video. The tables are based on typical security applications with 20% motion activity.

### Recording days for DVX 1000 with 80GB

Number of cameras

	4	9	12	16
1	73	33	24	18
2	37	16	12	9
3	24	11	8	6
4	18	8	6	5
5	15	7	5	4

### Recording days for DVX 1000 with 160GB

Number of cameras

	4	9	12	16
1	150	67	50	38
2	75	33	25	19
3	50	22	17	13
4	38	17	13	9
5	30	13	10	8

### Recording days for DVX 1000 with 250GB

Number of cameras

	4	9	12	16
1	237	105	79	59
2	119	53	40	30
3	79	35	26	20
4	59	26	20	15
5	47	21	16	12

### Recording days for DVX 1000 with 500GB

Number of cameras

	4	9	12	16
1	478	213	159	120
2	239	106	80	60
3	159	71	53	40
4	120	53	40	30
5	96	43	32	24



9855 Crosspoint Blvd., Suite 126 | Indianapolis, IN 46256 USA

PH: 317-845-9242 | FAX: 317-845-9275

Email: [info@integraltech.com](mailto:info@integraltech.com) | Visit our Web site at [www.integraltech.com](http://www.integraltech.com)